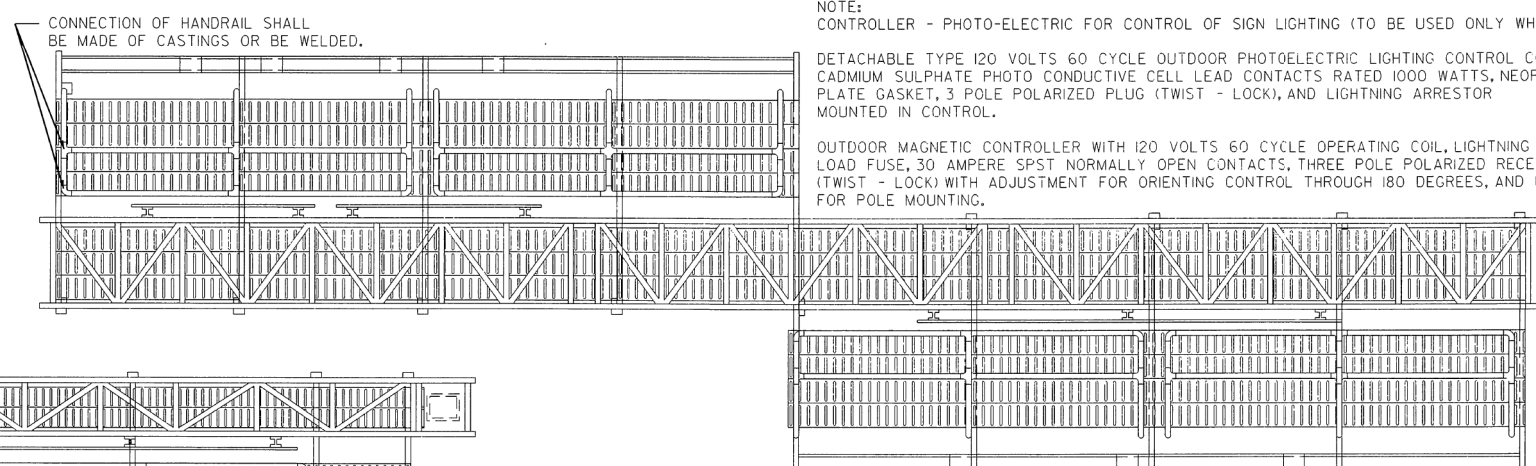


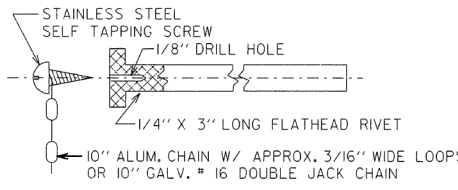
TYPICAL INSTALLATION OF WALKWAY



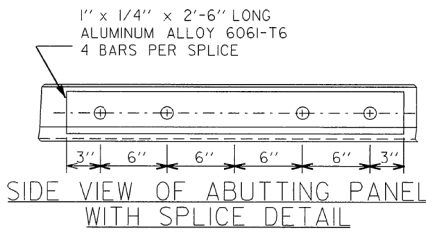
TYPICAL INSTALLATION TWO DIRECTIONS OF TRAFFIC

WALKWAY & HANDRAIL GENERAL NOTE
 WALKWAY & HANDRAIL MAY BE STARTED ON THE RIGHT SIDE OF THE STRUCTURE AT ANY POINT BETWEEN THE UPRIGHT & 4' LEFT OF THE C OF THE UPRIGHT.
 WALKWAY & HANDRAIL ON THE LEFT SIDE SHALL EXTEND AT LEAST 1' PAST THE LEFT SIDE OF THE FARTHEST LEFT SIGN.

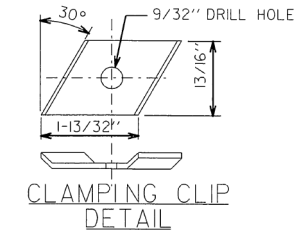
TYPICAL INSTALLATION ONE DIRECTION OF TRAFFIC CANTILEVER TRUSS



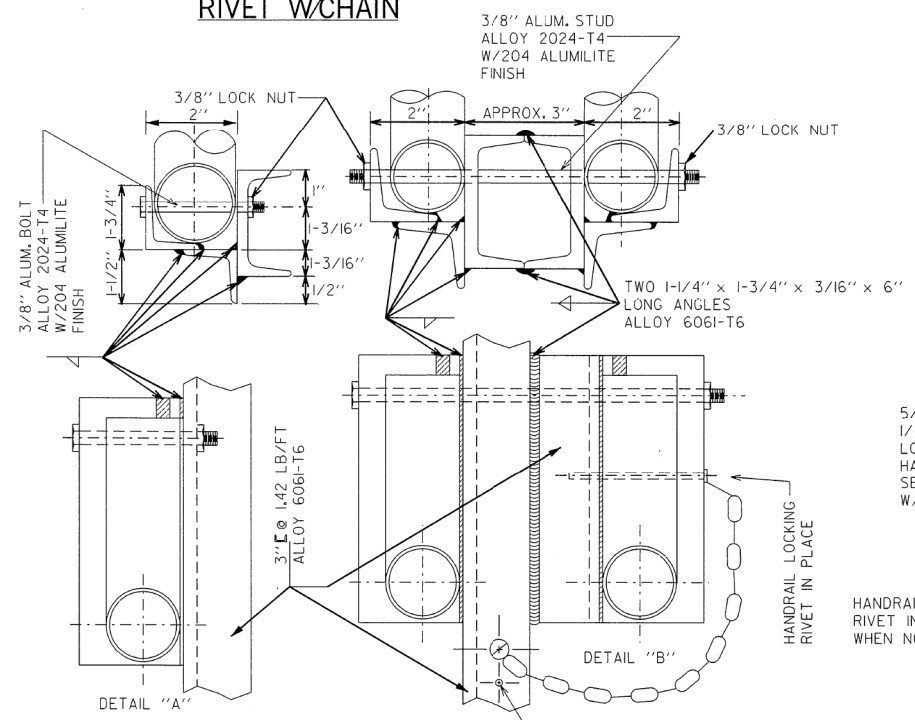
HANDRAIL LOCKING RIVET W/CHAIN



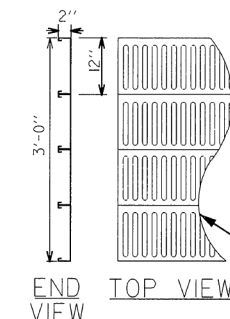
SIDE VIEW OF ABUTTING PANEL WITH SPLICE DETAIL



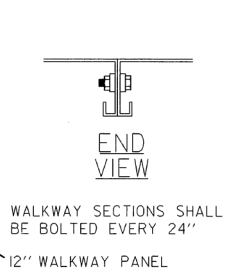
CLAMPING CLIP DETAIL



HANDRAIL CONNECTIONS

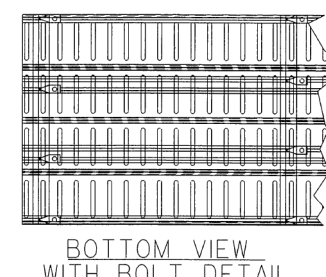


END VIEW

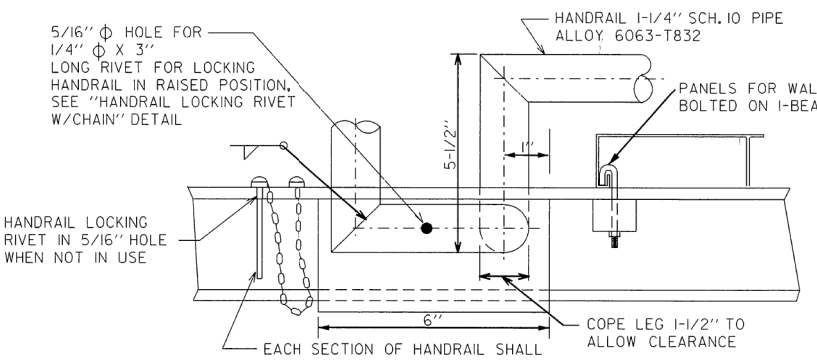


TOP VIEW

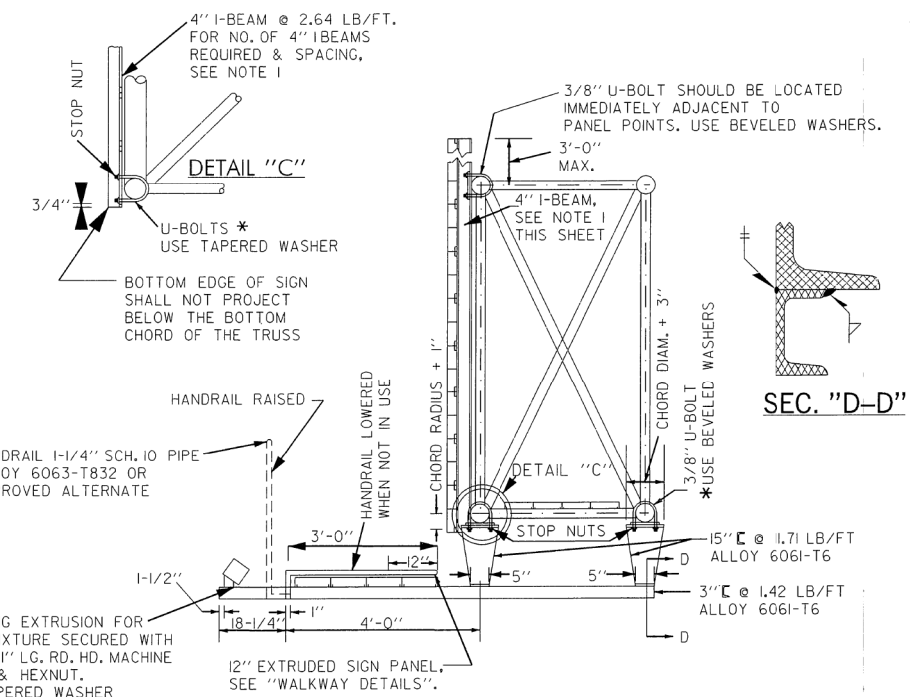
WALKWAY DETAILS



BOTTOM VIEW WITH BOLT DETAIL



HANDRAIL CONNECTION FOR SINGLE & DOUBLE UPRIGHT



SIGN CONNECTION DETAIL

*3/8\"/>

NOTE 1:
 2 I-BEAMS REQUIRED FOR SIGNS TO 10'-6\"/>

DESIGN		1-44 & US-62 INTERCHANGE
DRAWN		
CHECKED		
APPROVED		
SQUAD	GARVER	STATE JOB NO. 27050(04) SHEET NO. 141

TRUSS DETAILS (SHEET 3 OF 3)